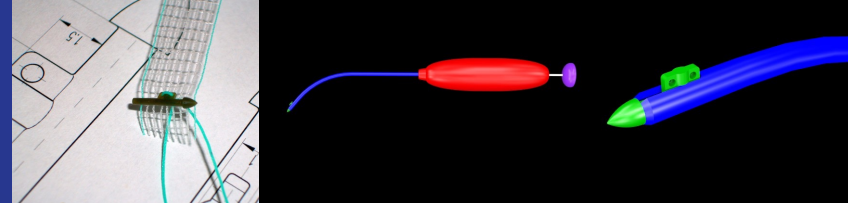
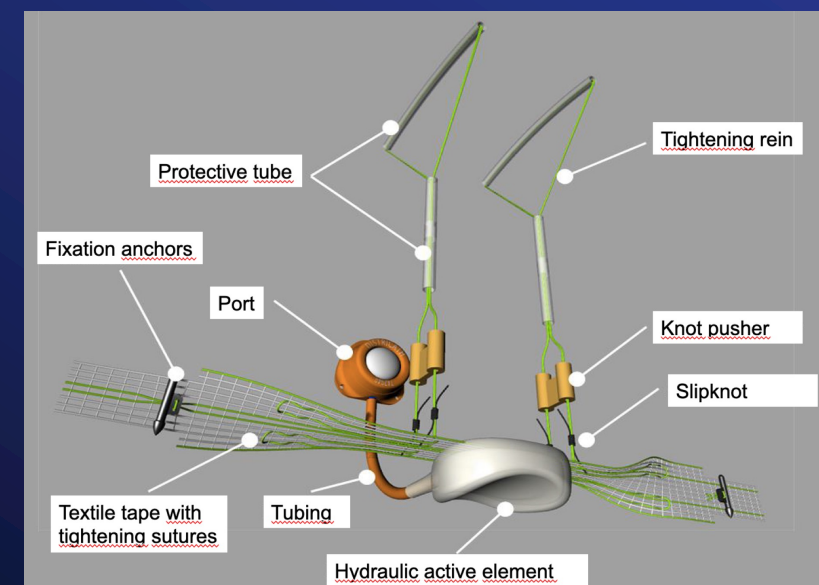
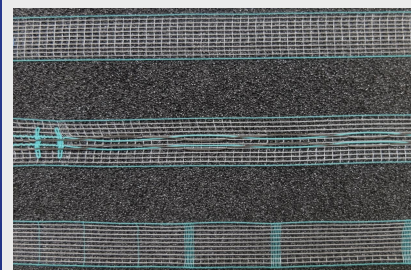


A NOVEL ADJUSTABLE SLING SYSTEM CAN EFFECTIVELY CONTROL URETHRAL CLOSURE PRESSURE IN MALE STRESS URINARY INCONTINENCE

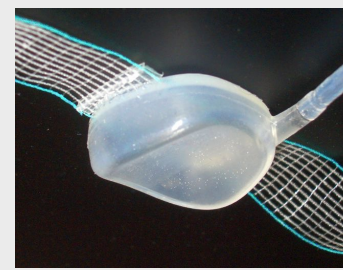


Anchor

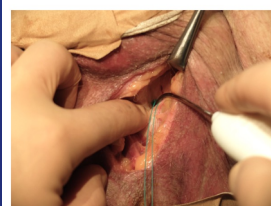
Anchor inserter with release button



Tape (PVDF)



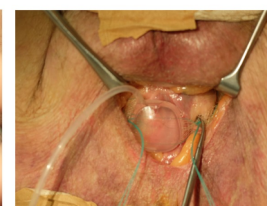
Active element (Silicone)



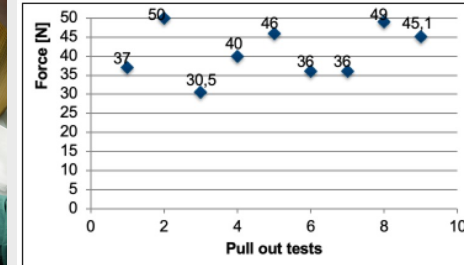
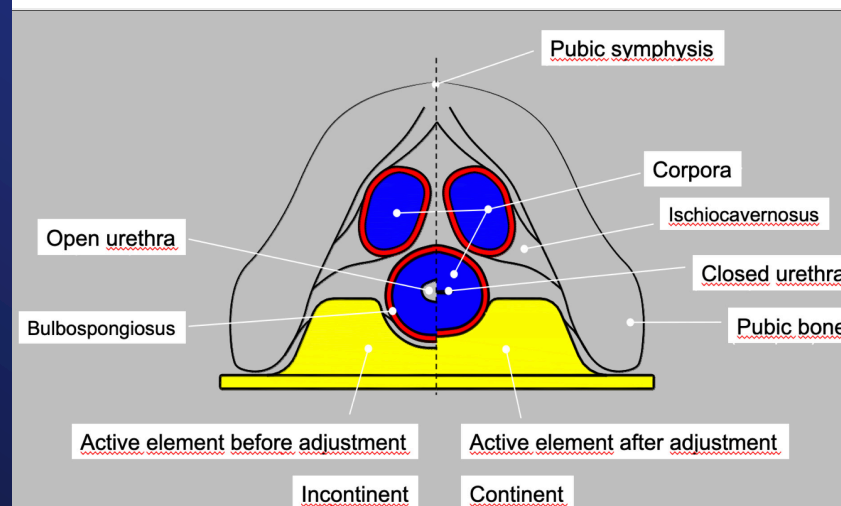
Bilateral anchor fixation



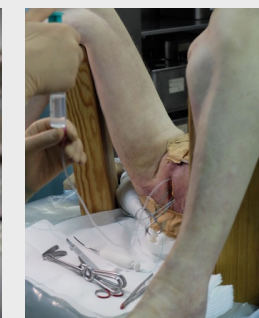
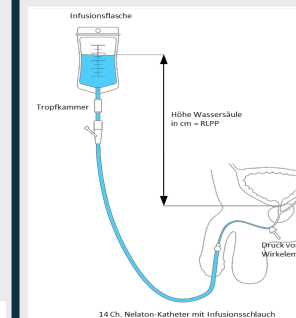
Tensioning test for anchor stability



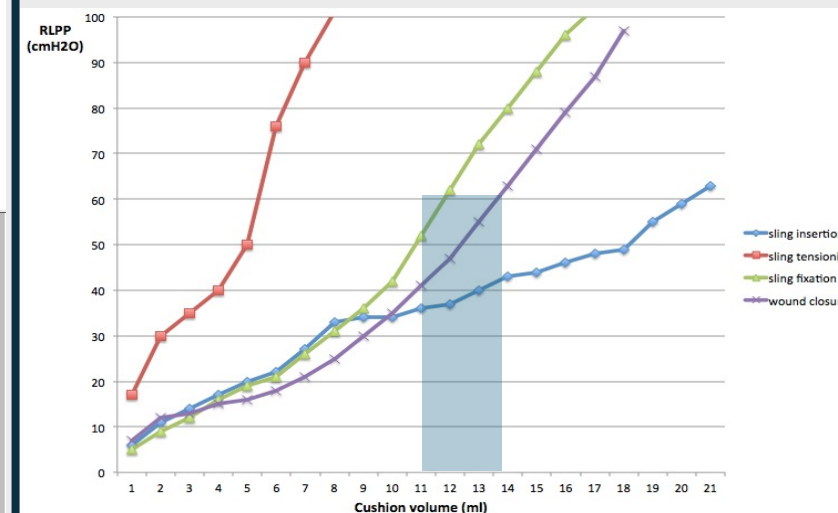
Filling of active element via port with tubing (0 – 20 ml)



Extraction force 30.5 – 50.0 N (med 41.1 N)



Measurement of RLPP via CVP system



4 series of RLPP measurement after

- 1) sling insertion
- 2) sling tensioning
- 3) final sling fixation
- 4) wound closure

Ralf Anding



Basel, Switzerland