

## W29: Digital palpation to imaging: How do or should pelvic-floor-muscle evaluation tools influence physiotherapy practice?

Workshop Chair: Chantale Dumoulin, Canada

27 August 2013 14:00 - 18:00

Start	End	Topic	Speakers
14:00	14:10	Introduction	<ul style="list-style-type: none"> <li>Chantale Dumoulin</li> </ul>
14:10	14:30	Digital evaluation to measure pelvic floor muscle function	<ul style="list-style-type: none"> <li>Chantale Dumoulin</li> </ul>
14:30	14:50	Manometry	<ul style="list-style-type: none"> <li>Melanie Morin</li> </ul>
14:50	15:10	Dynamometry	<ul style="list-style-type: none"> <li>Melanie Morin</li> </ul>
15:10	15:30	Electromyography	<ul style="list-style-type: none"> <li>Petra J. Voorham-van der Zalm</li> </ul>
15:30	16:00	Break	None
16:00	16:20	US	<ul style="list-style-type: none"> <li>Jennifer Kruger</li> </ul>
16:20	16:40	MRI	<ul style="list-style-type: none"> <li>Chantale Dumoulin</li> </ul>
16:40	16:50	Questions	All
16:50	17:10	How do or should PFM evaluation tools influence our practice with UI?	<ul style="list-style-type: none"> <li>Chantale Dumoulin</li> <li>Petra J. Voorham-van der Zalm</li> </ul>
17:10	17:30	How do or should PFM evaluation tool influence our practice with POP?	<ul style="list-style-type: none"> <li>Jennifer Kruger</li> </ul>
17:30	17:50	How do or should PFM evaluation tool influence our practice with perineal pain?	<ul style="list-style-type: none"> <li>Melanie Morin</li> </ul>
17:50	18:00	Questions	All

### Aims of course/workshop

Aims: to review evidence-based literature on PFM evaluation tools —from digital evaluation to MRI imaging— and their influence on clinical practice.

#### Objectives:

1. To review PFM evaluation tools —digital evaluation, pressure, EMG, dynamometry US and MRI— including their psychometric properties (reliability, validity...), advantages and disadvantages.
2. To present the known body of evidence on the relationships between (1) pelvic-floor morphological deficit and dysfunction and (2) symptomatology, diagnosis and therapy outcome predictions.
3. To examine the impact PFM evaluation literature has or should have on clinical practice for patients with urinary incontinence (UI), pelvic organ prolapse (POP) and vulvo-vaginal (perineal) pain.

# Digital Palpation to Imaging: How Do or Should Pelvic-Floor-Muscle Evaluation Tools Influence Physiotherapy Practice?

## 1- Digital evaluation used to measure pelvic-floor-muscle function

Chantale Dumoulin

Associate Professor and Researcher

Urogynecological health and Aging Canadian Research Chair, Holder

School of rehabilitation, Faculty of Medicine

University of Montreal, Canada

[Chantal.dumoulin@umontreal.ca](mailto:Chantal.dumoulin@umontreal.ca)

### Aims of this topic:

1. To describe the digital evaluation technique used to measure pelvic floor muscle (PFM) function.
2. To present the PFM digital evaluation scales used to assess (a) passive strength, (b) active strength, (c) relaxation and (d) levator injury.
3. To outline the psychometric properties of digital evaluation scales and how these correlate with other PFM assessment tools.
4. To discuss the clinical recommendations for digital evaluation of the PFM function and the advantages and limitations of the technique.

### Definition of the pelvic-floor-muscle digital evaluation:

Pelvic-floor-muscle digital evaluation is the evaluation of the PFM qualitative and quantitative functions through perineal, vaginal or anal palpation using one or two fingers (Dumoulin, 2011). PFM qualitative function is defined by the qualitative/subjective determination of a PFM's size, symmetry, pain, trigger points (TP) and capacity to contract with isolation/compensation or facilitation. PFM quantitative function is defined by passive strength or tone, active strength and reflex contraction (Messelink, 2005; Haylen, 2010).

### The PFM digital evaluation encompasses:

- 1- Good communication with and consent of the patient (Dumoulin, 2011)
- 2- Patient instruction on how to contract the PFMs correctly (Crotty, 2011)
- 3- A perineal assessment evaluation, including perineal elevation or descent on PFM contraction, cough and Valsalva (Haylen, 2010; Dumoulin, 2011)
- 4- A vaginal assessment evaluation: morphological integrity and functional assessment (Messelink, 2005; Haylen, 2010 ; Dumoulin, 2011)
- 5- An anal assessment evaluation: anal sphincter tone, strength and morphological integrity; perineal body deficiency; and the puborectalis, pubococcygeus, iliococcygeus and coccygeus tones and strengths (Dumoulin, 2011 ; Haylen, 2010)

## **PFM digital evaluation components and scales used to evaluate them:**

- 1- Evaluation of pelvic floor passive force or tone (Simons, 1998)
  - a. Scales for PFM tone and their psychometric properties (Devreese, 2004; Reissing, 2005; Boyle, 2007; Dietz, 2008; Gentilcore, 2010)
- 2- Evaluation of pelvic floor active force or strength
- 3- Scales for PFM active force or strength and psychometric properties (Isherwood, 2000; Laycock, 2001; Messelink, 2005)
  - a. One or two fingers
  - b. Positions in which the PFM strength is assessed (Frawley, 2006)
- 4- Evaluation of PFM relaxation and psychometric properties
  - a. Scales for PFM relaxation (DeRidders, 1998; Reissing, 2005; Messelink, 2005)
- 5- Evaluation of levator (puborectalis) injury and psychometric properties (Dietz, 2008; Krugger, 2010)
- 6- Qualitative determination of PFM function (Dumoulin, 2011)
  - a. Isolation of PFM contraction/compensation
  - b. PFM volume at rest and during contraction
  - c. Symmetry of left/right PFM fibres
  - d. Pain, tension and TP
  - e. Coordination with cough or Valsalva

## **Clinical advantages and limitations of a digital evaluation and how it correlates with other PFM assessment tools.**

### **References:**

Bo, K. and H. B. Finckenhagen (2003). *"Is there any difference in measurement of Pelvic floor muscle strength in supine and standing position?"* Acta Obstet Gynecol Scand 82(12):1120-1124.

Boyles E. *Validating a clinical measure of levator hiatus size.* AJOG;2007 Feb;196(2):174.e1-4.

Crotty K. *Investigation of optimal cues to instruction for pelvic floor muscle contraction: a pilot study using 2D ultrasound imaging in pre-menopausal, nulliparous, continent women.* Neurourology and Urodynamics. 2011; 30:1620–1626.

Devereese A. *Clinical evaluation of pelvic floor muscle function in continent and incontinent women.* Neurourol. Urodynam. 23:190;197, 2004.

- Dietz HP. *Levator avulsion and grading of pelvic floor muscle strength*. Int. Urogynecol J. 2008; 19:633-636.
- Dietz HP. *The quantification of levator muscle resting tone by digital assessment*. 2008 Int Urogynecol J. 19:1489–14932.
- Frawley H. *Reliability of pelvic floor muscle strength assessment using different test positions and tools*. Neurourol Urodyn. 2006;25(3):236-42.
- Frawley H. *Effect of test position on pelvic floor muscle assessment*. Int Urogynecol J Pelvic Floor Dysfunct. 2006 Jun;17(4):365-71. Epub 2005 Oct 5.
- Haylen B. *An International Urogynecological Association (IUGA)/International Continence Society (ICS) Joint Report on the Terminology for Female Pelvic Floor Dysfunction*. Neurourology and Urodynamics. 2010;29(1):4-20.
- Isherwood PJ. *Comparative assessment of pelvic floor strength using a perineometer and digital examination*. BJOG 2000 Aug;107(8):1007-11.
- Kruger J, Dietz P, Dumoulin C. *Can we ‘feel’ with our fingers as well as we ‘see’ with ultrasound?* Neurourology & Urodynamics.2010 29(6): 259.
- Laycock J, Jerwood D. *Pelvic Floor Muscle Assessment: The PERFECT Scheme*. Physiotherapy. 2001;87(12):631-42
- Dumoulin, C, Madill S, Chaffey, S, *A pelvic floor muscle evaluation pedagogical tool*. 2011.
- Messelink B. et al. *Standardization of terminology of pelvic floor muscle function and dysfunction: report from the pelvic floor clinical assessment group of the International Continence Society*. Neurourol Urodyn. 2005;24(4):374-80.
- Morin M, Dumoulin C, Bourbonnais D et al. *Pelvic floor maximal strength using vaginal digital assessment compared to dynamometric measurements*. Neurourology and Urodynamics 23(4):336-41.
- Reissing J. *Pelvic floor muscle functioning in women with vulvar vestibulitis syndrome*. Psychosom Obstet Gynaecol.2005 Jun; 26(2):107-13.
- Simons D. *Understanding and measurement of muscle tone as related to clinical muscle pain*. Pain 1998 ;75:1–17.
- Travell J, Simons D. 1992 *The trigger point manual*. Vol. 2. Williams & Wilkins, Baltimore

## Digital Palpation to Imaging: How Do or Should Pelvic-Floor-Muscle Evaluation Tools Influence Physiotherapy Practice?

Topic: Manometry

Mélanie Morin, PT, PhD  
Assistant Professor and Researcher  
Étienne-Le Bel Clinical Research Centre  
School of Rehabilitation  
Faculty of Medicine and Health Sciences  
University of Sherbrooke, CANADA  
[Melanie.m.morin@usherbrooke.ca](mailto:Melanie.m.morin@usherbrooke.ca)

### Aims of this topic:

1. To describe the properties and functioning of manometric measurements used to assess the pelvic floor muscles (PFM).
2. To outline the psychometric properties of the manometry including reliability and validity.
3. To discuss the clinical recommendations associated with the uses of manometry. The advantages and limitations of manometry will be discussed.

### Constituents and methodology associated with manometry

In 1948, Dr. Kegel (1948) developed an intravaginal device, the perineometer, to assess PFM strength. The vaginal pressure probe was connected to a manometer in order to measure the intravaginal pressure from the PFM in millimeters of mercury (mmHg). Since then, several types of pressure probes with different shapes and technical properties have been developed and studied (Dougherty et al. 1986; Bo et al. 1990; Laycock et al. 1994; Sanches et al. 2009). These tools can measure pressure in mmHg or cm H<sub>2</sub>O. Several manometry units are commercially available and were developed in different countries: Camtech (Norway), Peritron (Australia), Miofeedback perina (Brazil), Gymna (Belgium), etc.

## Reliability

Several muscle parameters have to be defined to ensure a comprehensive assessment of the PFM and hence, a thorough understanding of the pathophysiology of incontinence, prolapse and pain conditions. Good intra-rater (test-retest) reliability has been demonstrated for maximal squeeze pressure (ICC ranging from 0.88 to 0.96) and resting pressure (tone) (ICC=0.74-0.77) (Bo et al. 1990; Kersch-Schindl et al. 2002; Hundley et al. 2005; Frawley et al. 2006; Frawley et al. 2006; Rahmani et al. 2011). Acceptable inter-rater reliability for strength parameter was found by Ferreira et al. (2011). Regarding the endurance, Frawley et al. (2006), found the endurance measurement to be unreliable. Contrarily, Rahmani demonstrated good reliability when assessing the endurance during a sustained 60% maximal contraction (Rahmani et al. 2011).

One advantage of the pressure measurement is the possibility to perform the assessment in different positions (lying, sitting and standing). It has been argued that upright positions are more “functional” because urinary incontinence occurs in these circumstances. Yet, the clinical advantages of assessing women in a standing position have not been supported by scientific evidences and the effects these positions have on the muscles themselves are controversial (Bo et al. 2003; Frawley et al. 2006). Overall, the parameters proved to be reliable in these positions, supine showing the highest reliability.

## Validity and clinical uses

The validity of the measurement was studied by comparing the maximal squeeze pressure to other measurements. It was correlated with vaginal palpation, for instance, using:

- the Oxford scale ( $r=0.703-0.814$ ) (Isherwood et al. 2000; Riesco et al. 2010; Da Roza et al. 2012) and
- the Brink scale ( $r=0.68-0.71$ ) (Kersch-Schindl et al. 2002; Hundley et al. 2005).

Ultrasound measurements were also correlated with maximal pressure:

- the correlation was good (ICC=0.72-0.81) when comparing the maximal pressure to the bladder base movement evaluated with transabdominal US (Chehrebrazi et al. 2009; Riesco et al. 2010)
- the correlation was moderate when comparing the maximal pressure to bladder neck movement ( $r=0.43$ ) (Thompson et al. 2006) and muscle thickness ( $r=0.49$ ) and levator hiatus area ( $-0.46$ ) (Braekken et al. 2013) assessed by transperineal ultrasound.
- Levator hiatus area was correlated with resting pressure ( $r=-0.46$ ) and endurance ( $r=-0.40$ ) (Braekken et al. 2013).

The validity of the measurement is also supported by the capacity of the measurement to detect changes following treatment (Aksac et al. 2003) and to discriminate between groups, e.g. continent and incontinent women (Thompson et al. 2006).

### Recommendations

There are a few known precautions to bear in mind regarding the uses of the pressure perineometry. Increases in intra-abdominal pressure, occurring if a patient co-contracts the abdominal muscles (rectus abdominis), or strain instead of contracting the PFM can interfere with pressure measurements.

Some recommendations can be applied to ensure the validity of the measurement:

- 1-performing vaginal palpation before using the perineometer to make sure the patient is able to correctly contract her PFM;
- 2-observing the cranial movement of the vaginal probe during measurement of the muscle contraction;
- 3-not considering the contractions associated with the Valsalva manoeuvre or retroversion of the hip (Bo et al. 1990; Bump et al. 1996). It has been argued that manometry is not suitable to assess reflex contraction during a cough (Bo et al. 2011).

Moreover, it should be pointed-out that the use of perineometry is therefore difficult when a patient has a really low PFM strength, because no inward movement of the probe is possible in this case.

The size of the probe and the brand of the device were also demonstrated to influence the measurement (Bo et al. 2005; Barbosa et al. 2009). Barbosa et al (2009) compared the Peritron with two brazilian devices and Bo et al. (2005) compared the Peritron to the Camtech. Both studies conclude that, the measurements of vaginal squeeze pressure differ depending on the vaginal probe used. Results from published studies using various probes should, therefore, not be compared or combined in systematic reviews or meta-analyses.

The placement of the probe is another factor reported to be important. It was recommended to position the probe at the level of the PFM which corresponds to the high-pressure zone within the vagina (Guaderrama et al. 2005; Jung et al. 2007).

This presentation will draw upon these references:

- Aksac, B., S. Aki, et al. (2003). "Biofeedback and pelvic floor exercises for the rehabilitation of urinary stress incontinence." Gynecol Obstet Invest **56**(1): 23-27.
- Barbosa, P. B., M. M. Franco, et al. (2009). "Comparison between measurements obtained with three different perineometers." Clinics (Sao Paulo) **64**(6): 527-533.
- Bo, K. and C. Constantinou (2011). "Reflex contraction of pelvic floor muscles during cough cannot be measured with vaginal pressure devices." Neurourol Urodyn **30**(7): 1404.
- Bo, K. and H. B. Finckenhagen (2003). "Is there any difference in measurement of pelvic floor muscle strength in supine and standing position?" Acta Obstet Gynecol Scand **82**(12): 1120-1124.
- Bo, K., B. Kvarstein, et al. (1990). "Pelvic floor muscle exercises for the treatment of female stress urinary incontinence : II. Validity of vaginal pressure measurements of pelvic floor muscle strenght and the necessity of supplementary methods for control of correct contraction." Neurourol Urodyn **9**: 479-487.
- Bo, K., B. Kvarstein, et al. (1990). "Pelvic floor muscle exercises for the treatment of female stress urinary incontinence: I. Reliability of vaginal pressure measurements of pelvic floor muscle strength." Neurourology and Urodynamics **9**: 471-477.



- Bo, K., R. Raastad, et al. (2005). "Does the size of the vaginal probe affect measurement of pelvic floor muscle strength?" Acta Obstet Gynecol Scand **84**(2): 129-133.
- Braekken, I. H., M. Majida, et al. (2013). "Are Pelvic Floor Muscle Thickness and Size of Levator Hiatus Associated With Pelvic Floor Muscle Strength, Endurance and Vaginal Resting Pressure in Women With Pelvic Organ Prolapse Stages I-III? A Cross Sectional 3D Ultrasound Study." Neurourol Urodyn.
- Bump, R. C., A. Mattiasson, et al. (1996). "The standardization of terminology of female pelvic organ prolapse and pelvic floor dysfunction." Am J Obstet Gynecol **175**(1): 10-17.
- Chehrehazi, M., A. M. Arab, et al. (2009). "Assessment of pelvic floor muscle contraction in stress urinary incontinent women: comparison between transabdominal ultrasound and perineometry." Int Urogynecol J Pelvic Floor Dysfunct **20**(12): 1491-1496.
- Da Roza, T., T. Mascarenhas, et al. (2012). "Oxford Grading Scale vs manometer for assessment of pelvic floor strength in nulliparous sports students." Physiotherapy.
- Dougherty, M. C., R. Abrams, et al. (1986). "An instrument to assess the dynamic characteristics of the circumvaginal musculature." Nursing Research **35**(4): 202-206.
- Ferreira, C. H., P. B. Barbosa, et al. (2011). "Inter-rater reliability study of the modified Oxford Grading Scale and the Peritron manometer." Physiotherapy **97**(2): 132-138.
- Frawley, H. C., M. P. Galea, et al. (2006). "Effect of test position on pelvic floor muscle assessment." Int Urogynecol J Pelvic Floor Dysfunct **17**(4): 365-371.
- Frawley, H. C., M. P. Galea, et al. (2006). "Reliability of pelvic floor muscle strength assessment using different test positions and tools." Neurourol Urodyn **25**(3): 236-242.
- Guaderrama, N. M., C. W. Nager, et al. (2005). "The vaginal pressure profile." Neurourol Urodyn **24**(3): 243-247.
- Hundley, A. F., J. M. Wu, et al. (2005). "A comparison of perineometer to brink score for assessment of pelvic floor muscle strength." Am J Obstet Gynecol **192**(5): 1583-1591.
- Isherwood, P. J. and A. Rane (2000). "Comparative assessment of pelvic floor strength using a perineometer and digital examination." British Journal of Obstetrics and Gynaecology **107**: 1007-1011.
- Jung, S. A., D. H. Pretorius, et al. (2007). "Vaginal high-pressure zone assessed by dynamic 3-dimensional ultrasound images of the pelvic floor." Am J Obstet Gynecol **197**(1): 52 e51-57.
- Kegel, A. (1948). "Progressive resistance exercise in functional restoration of the perineal muscles." American Journal of Obstetrics and Gynecology **56**: 238-248.
- Kersch-Schindl, K., E. Uher, et al. (2002). "Reliability of pelvic floor muscle strength measurement in elderly incontinent women." Neurourology and Urodynamics **21**(1): 42-47.
- Laycock, J. and D. Jerwood (1994). "Development of the Bradford perineometer." Physiotherapy **80**(139-142).

- Rahmani, N. and M. A. Mohseni-Bandpei (2011). "Application of perineometer in the assessment of pelvic floor muscle strength and endurance: a reliability study." J Bodyw Mov Ther **15**(2): 209-214.
- Riesco, M. L., S. Caroci Ade, et al. (2010). "Perineal muscle strength during pregnancy and postpartum: the correlation between perineometry and digital vaginal palpation." Rev Lat Am Enfermagem **18**(6): 1138-1144.
- Sanches, P. R., D. P. Silva, Jr., et al. (2009). "Vaginal probe transducer: characterization and measurement of pelvic-floor strength." J Biomech **42**(15): 2466-2471.
- Thompson, J. A., P. B. O'Sullivan, et al. (2006). "Assessment of voluntary pelvic floor muscle contraction in continent and incontinent women using transperineal ultrasound, manual muscle testing and vaginal squeeze pressure measurements." Int Urogynecol J Pelvic Floor Dysfunct **17**(6): 624-630.

## Digital Palpation to Imaging: How Do or Should Pelvic-Floor-Muscle Evaluation Tools Influence Physiotherapy Practice?

### Dynamometry

Mélanie Morin, PT, PhD  
Assistant Professor and Researcher  
Étienne-Le Bel Clinical Research Centre  
School of Rehabilitation  
Faculty of Medicine and Health Sciences  
University of Sherbrooke, CANADA  
[Melanie.m.morin@usherbrooke.ca](mailto:Melanie.m.morin@usherbrooke.ca)

#### Aims of this topic:

1. To describe the constituents and the methodology associated with dynamometric measurement tools of the pelvic floor muscles (PFM).
2. To present the psychometric properties of dynamometers including reliability and validity.
3. The advantages and limitations of dynamometry will be discussed.

#### Constituents and methodology

In the past 20 years, several versions of PFM dynamometers have been developed:

- Caufriez- la pince tonimétrique (Caufriez 1993). This tonimetric device consists of two branches that can be opened following an angular excursion. It was initially designed to assess PFM tone following an antero posterior vector. Forces from active PFM contraction can also be registered.
- Row (Rowe 1995). This device comprises a rod with a movable rigid window section that the muscles can press against.
- Ashton Miller (instrumented speculum) (Ashton-Miller et al. 2002). This instrument is similar to a conventional speculum with two branches but it is equipped with strain gauges to measure PFM function.

- Dumoulin (Montreal's dynamometer) (Dumoulin et al. 2003). This speculum is similar to the one above but it is mounted on a stabilizing plate so that, the evaluator cannot bias the device by moving the unit. This instrument has evolved in the last years. A mechanism to increase the vaginal opening smoothly in order to evaluate PFM passive properties during a dynamic stretch was developed. A third branch to verify if the PFM forces recorded are minimally influenced by intra-abdominal pressure was investigated. Finally, the size of the branches was reduced to the size of a little finger to allow the assessment of women with vaginal atrophy or vulvo-vaginal pain.
- Verelst & Leivseth (probe) (Verelst et al. 2004). This probe also comprises two branches that assess PFM forces in a latero-lateral position rather than the antero-posterior force vector.
- Constantinou (probe with "arms") (Constantinou et al. 2007). It consists of a rod with "arms" that open once in the vagina. There are different sensors to assess the spatial distribution of the force inside the vagina.
- Saleme (Probe with sensor) (Saleme et al. 2009). The Saleme's probe was designed for the same purpose with the only exception that the sensors are not mounted on "arms".
- Nunes (speculum) (Nunes et al. 2011). The Nune's speculum is basically a speculum equipped with strain gages.
- Kruger (elastometer) (Kruger et al. 2011). This instrument was designed to assess the passive forces (tone). The two branches are positioned to produce a latero-lateral stretch with the help of a motor inside the unit.

In sum, the PFM dynamometers differ in terms of size and shape, the force vector recorded (anteroposterior, latero-lateral or multi-directional forces) and other technical issues. Overall, during a PFM contraction, the lengthening or shortening of strain gauges glued on the speculum causes its electrical resistance to change. Voltage values from the strain gauge are then amplified, digitized and converted into units of force.

### In vitro properties

Dynamometers have shown good linearity, repeatability and ability to measure the resultant force independently of its point of application on the branch of the speculum in in-vitro calibration studies (Rowe 1995; Dumoulin et al. 2003; Verelst et al. 2004). Some versions offer the advantage of evaluating multidirectional forces originating from the PFM (Constantinou et al. 2007; Saleme et al. 2009). Other dynamometers can be adjusted to measure the PFM function at different vaginal apertures (Dumoulin et al. 2003; Verelst et al. 2004; Morin et al. 2010; Kruger et al. 2011).

### Reliability

The test-retest reliability of PFM strength was found to be good (ICC=0.83-0.89) (Dumoulin et al. 2004; Verelst et al. 2004; Miller et al. 2007; Nunes et al. 2011). Other parameters such as endurance (ICC=0.81), speed of contraction (ICC=0.92) and tonicity (passive forces and stiffness) (ICC=0.74-0.92) of the PFM also showed good test-retest reliability (Morin et al. 2007; Morin et al. 2008; Kruger et al. 2011).

### Validity and clinical applications

Dynamometers have been shown to discriminate between stress urinary incontinent and continent women (Morin, 2004b; Dumoulin 2004). Various studies have been conducted to support the validity of dynamometric measurements. The maximal strength recorded with the dynamometer was correlated to vaginal palpation (Oxford scale,  $r=0.727$ ) (Morin et al. 2004). Moreover, dynamometric measurements have been proven to be minimally influenced by increases in intra-abdominal pressure (Morin et al. 2006). Discriminant validity was also demonstrated because the dynamometer was able to distinguish between continent and incontinent women (Morin et al. 2004). Furthermore, good sensitivity to detect changes following treatment was also demonstrated (Dumoulin et al. 2011).

The dynamometers were proven to be reliable and valid. Some versions offer the possibility to assess the PFM in various positions (lying, sitting and standing). Multi-dimensional force vectors are also possible. The main limitation associated with PFM dynamometers is their lack of accessibility because these devices are mostly used by their designers and not commercially available.

This presentation will draw upon these references:

- Ashton-Miller, J. A., J. O. L. DeLancey, et al. (2002). Method and apparatus for measuring properties of the pelvic floor muscles. US patent 6, 232 B1.
- Caufriez, M. (1993). Postpartum. Rééducation urodynamique. Approche globale et technique analytique. Book chapter:2. Brussels, Belgium, Collection Maïte. **Tome 3**: 36-44.
- Constantinou, C. E. and S. Omata (2007). "Direction sensitive sensor probe for the evaluation of voluntary and reflex pelvic floor contractions." Neurourol Urodyn **26**(3): 386-391.
- Dumoulin, C., D. Bourbonnais, et al. (2003). "Development of a dynamometer for measuring the isometric force of the pelvic floor musculature." Neurourol Urodyn **22**(7): 648-653.
- Dumoulin, C., D. Bourbonnais, et al. (2011). "Predictors of success for physiotherapy treatment in women with persistent postpartum stress urinary incontinence." Arch Phys Med Rehabil **91**(7): 1059-1063.
- Dumoulin, C., D. Gravel, et al. (2004). "Reliability of dynamometric measurements of the pelvic floor musculature." Neurourol Urodyn **23**(2): 134-142.
- Kruger, J., P. Nielsen, et al. (2011). "Test-retest reliability of an instrumented elastometer for measuring passive stiffness of the levator ani muscle." Neurourol Urodyn **30**(6): 865-867.
- Miller, J. M., J. A. Ashton-Miller, et al. (2007). "Test-retest reliability of an instrumented speculum for measuring vaginal closure force." Neurourol Urodyn **26**(6): 858-863.
- Morin, M., D. Bourbonnais, et al. (2004). "Pelvic floor muscle function in continent and stress urinary incontinent women using dynamometric measurements." Neurourol Urodyn **23**(7): 668-674.
- Morin, M., C. Dumoulin, et al. (2004). "Pelvic floor maximal strength using vaginal digital assessment compared to dynamometric measurements." Neurourol Urodyn **23**(4): 336-341.
- Morin, M., C. Dumoulin, et al. (2007). "Reliability of speed of contraction and endurance dynamometric measurements of the pelvic floor musculature in stress incontinent parous women." Neurourol Urodyn **26**(3): 397-403; discussion 404.

- Morin, M., D. Gravel, et al. (2008). "Reliability of dynamometric passive properties of the pelvic floor muscles in postmenopausal women with stress urinary incontinence." Neurourol Urodyn **27**(8): 819-825.
- Morin, M., D. Gravel, et al. (2010). "Application of a new method in the study of pelvic floor muscle passive properties in continent women." J Electromyogr Kinesiol **20**(5): 795-803.
- Morin, M., D. Gravel, et al. (2006). "Influence of intra-abdominal pressure on the validity of pelvic floor dynamometric measurements." Neurourol Urodyn **25**(6): 530-531.
- Nunes, F. R., C. C. Martins, et al. (2011). "Reliability of bidirectional and variable-opening equipment for the measurement of pelvic floor muscle strength." PM R **3**(1): 21-26.
- Rowe, P. (1995). A new system for the measurement of pelvic floor muscle strength in urinary incontinence. In 12th International Congress of the World Confederation for Physical Therapy Abstract book.
- Saleme, C. S., D. N. Rocha, et al. (2009). "Multidirectional pelvic floor muscle strength measurement." Ann Biomed Eng **37**(8): 1594-1600.
- Verelst, M. and G. Leivseth (2004). "Force-length relationship in the pelvic floor muscles under transverse vaginal distension: a method study in healthy women." Neurourol Urodyn **23**(7): 662-667.

## Digital Palpation to Imaging: How Do or Should Pelvic-Floor-Muscle Evaluation Tools Influence Physiotherapy Practice?

### 3. Electromyographic registration of the pelvic floor musculature to measure pelvic floor muscle function

Petra J. Voorham- van der Zalm, PhD,  
Associate Professor, Pelvic Floor Physiotherapy,  
Leiden University Medical Center, Department of Urology,  
J3-P. Po box 9600, 2300 RC Leiden, The Netherlands

Various clinical methods, each with its own advantages and disadvantages, have been used for the assessment of PFM contraction or function. These methods include observation, palpation, electromyography (EMG), ultrasound, magnetic resonance imaging (MRI), manometers and dynamometers.

Electromyography (EMG) is a tool currently used in clinical and research settings and in daily practice to assess the PFM. This hand-out will give an overview what is discussed in the presentation; “psychometric properties of EMG registration of the pelvic floor”. It will discuss the constituents and the methodology associated with EMG registration. Available research evidence about the psychometric properties of the currently available instruments will be reviewed. Their respective advantages and limitations will be discussed in order to enable clinicians and researchers to better select the appropriate tool and analyse.

In the psychometrics, reliability is used to describe the overall consistency of a measure. A measure is said to have a high reliability if it produces similar results under consistent conditions. For example, measurements of people’s height and weight are often extremely reliable. Inter-rater reliability assesses the degree to which test scores are consistent when measurements are taken by different people using the same methods.

Test-retest reliability assesses the degree to which test scores are consistent from one test administration to the next. Measurements are gathered from a single rater who uses the same methods or instruments and the same testing conditions. This includes intra-rater reliability. In psychometrics, validity has a particular application known as test validity: "the degree to which evidence and theory support the interpretations of test scores" ("as entailed by proposed uses of tests").

There are two types of electrodes used for assessing the EMG of PFM; needle electrodes or surface electrodes. With needle or wire EMG the electrodes are placed directly in the target muscle by puncturing them through the skin and/or other tissues surrounding the muscle. Podnar and Vodusek recommended concentric needle EMG as the most informative test to detect PFM denervation or reinnervation. Wire EMG and concentric needle EMG, therefore, are recommended for scientific purposes. Because this is an invasive and uncomfortable procedure it has fallen into relative disuse and is not suitable for use in daily practice in pelvic floor physiotherapy [1;2].

EMG registration of the PFM is used for Biofeedback. Biofeedback has been found



to be effective for the treatment of pelvic floor dysfunction (PFD). Biofeedback (BF) is one physical therapy adjunct that might be useful in the treatment of pelvic floor dysfunction.

Many EMG devices developed to record intra-vaginal and intra-anal biofeedback during the treatment of PFD. The devices come in various shapes and sizes, and most comprise large plates or rings. Therefore, comparison of results from one device to another is not recommended [3;4]. These devices have all been developed empirically and are not specifically designed with the pelvic floor anatomy in mind. Consequently, the electrode covers multiple pelvic floor muscles and registers other muscles in the proximity, such as the abdominal muscles. Thus, current devices are not optimized for biofeedback registration of the pelvic floor musculature since they are not capable of registering the activity of a single component of the PFM. In addition, there is no scientifically validated standard for normal pelvic floor function measured with these devices. Non-invasive recording of surface-EMG from the pelvic floor muscles usually adopts either longitudinal or ring-shaped pairs of electrodes or perianal electrodes.

When surface EMG is used clinically, interpretation of the signals must be done with caution because the risk of cross talk from other muscles is high and because of variability in electrode placement within the vagina or anal canal [3;4]. The validity and reliability of these devices will be discussed [4-7]. The PFM activity during running has been investigated. The specific goals were to describe and test the reliability of the PFM EMG activity and time variables during running. The periform was used to measure pelvic floor muscle activity. This study concludes that the EMG variables of good reliability could be shown, while poor evidence was gained for the reliability of time variables. In particular, further studies should consider adaptations regarding the vaginal probe[8].

Is PFM activation altered by changes in sensory feedback, muscle length or tissue position caused by two different vaginal probes used to record surface electromyography (EMG). Three conditions were compared (a) without any probe inserted into the vagina, (b) while a Femiscan<sup>TM</sup> probe was in situ, and (c) while a Periform<sup>TM</sup> vaginal probe was in situ. There were no differences in peak EMG amplitude recorded during the MVCs across the three conditions. The authors stated that PFM muscle activation is not affected by different probes inserted into the vagina[9] The between-trial and between-day reliability of EMG data recorded from the PFM using two different vaginal probes was determined with the Femiscan and the Periform vaginal probes Overall, between-trial reliability was fair too high for the Femiscan and good too high for the Periform, however between-day reliability was generally poor for both vaginal probes). The results suggest that although it is acceptable to use PFM surface EMG as a biofeedback tool for training purposes, it is not recommended for use to make between- subject comparisons or to use as an outcome measure between-days when evaluating PFM function[5].

The retest reliability of repeated intravaginal surface electromyography (surface EMG) of the pelvic floor muscles in healthy women has been studied, who were able to perform correct pelvic floor muscle contractions. The study shows that surface EMG is a reliable method of assessing pelvic floor muscle activity in healthy women[10] The reliability and clinical predictive validity of pelvic floor muscle surface electromyography (sEMG) for use in early detection and prophylaxis of

urogynecologic disorders has been studied using an intravaginal sensor. SEMG data demonstrated significant test-retest reliability ( $P < .001$ ) and significant clinical predictive validity ( $P < .05$ ) for undifferentiated urinary incontinence, stress incontinence, urge incontinence, menstrual status and parity on both initial and repeat examinations. Recent advances in sEMG technology make it cost-effective, convenient, non-invasive and easy to learn and administer by assisting staff. This technology is a powerful complementary tool for digital assessment of pelvic floor muscles and should be considered for use in gynaecologic practice[11].

This study validates surface EMG as a measure of pelvic muscle and abdominal activity by showing its high correlation to internal pressure data. A repeated measures multivariate analysis of variance demonstrated that visual and auditory biofeedback of EMG during pelvic floor contractions increases intravaginal pressure when compared with trials without biofeedback. Potential benefits of fabric electrodes include reduced invasiveness and risk and the ease with which patients can utilize this technology for home practice[7].

### **Recent developments**

The purposes of this study were to compare: the reliability of electromyography (EMG) activity recorded from the pelvic floor muscles (PFMs) using a new differential suction electrode (DSE) to the reliability of EMG data recorded using other common electrodes, and (ii) motion artefact contamination of EMG activity recorded from the PFMs using the DSE and the Femiscan™ electrode. The DSE has excellent between-trial reliability and performs better than the Femiscan™ electrode in terms of motion artifact contamination. It does not perform as well as the Femiscan™ electrode in terms of between-day reliability--a result that is not unexpected given the localized region from which the DSE records activity.[6] A new vaginal device--a vaginal photoplethysmograph with build-in surface electromyography (EMG)--that allows simultaneous assessment of pelvic floor muscle activity and vaginal blood flow has been tested. The device is sensitive to changes in vaginal blood flow in response to sexual stimuli, and it is able to pick up small, involuntary changes in pelvic floor activity associated with anxiety. Also, the device is able to record changes in pelvic floor activity during voluntary pelvic floor contractions. This new device will be a valuable tool in further research on superficial dyspareunia[12] One of our investigations was performed in order to validate the anatomical positioning of commonly used commercially available probes, positioned according to standard protocol as used in daily practice by pelvic floor physiotherapists. Based on our findings we conclude that the electrodes of the probes, as we use them now during electro stimulation and biofeedback training in the treatment of pelvic floor dysfunction, are not optimal for the structures we want to register[13]. A new multiple array electrode probe (the MAPLe) has been developed for biofeedback registration of the individual (sides of the) pelvic floor muscles. A study was performed to determine the reliability and reproducibility of electromyography signals measured with the MAPLe in healthy volunteers. The conclusions of this study are that MAPLe appears to be very effective in measuring EMG values for individual muscular components at different sides of the pelvic floor men and women with different menopausal status, nulliparous or parous. It is the first time that the individual activity of the complex pelvic floor musculature has been measured and the results suggest that the MAPLe can be used to generate a healthy baseline data for the diagnosis and treatment of patients with pelvic dysfunction[4].

## **How do or should PFM evaluation tools influence clinical practice for UI?**

This will presents the known body of evidence on the relationship between (1) pelvic floor morphological deficit and dysfunction and (2) symptomatology, diagnosis and urinary incontinence outcome predictions for women with UI. It also examines the impact PFM evaluation literature has on treatment choice (exercise choice or parameters) for treating patients with UI.

**Pelvic floor Physiotherapy is recommended** in many published guidelines[14].

Pelvic floor muscle training has received Level-A evidence rating in the treatment of stress urinary incontinence in women, based on meta-analysis of numerous randomized control trials and is re in this review the authors stated that, the actual regimen of PFM training used varies widely in these RCTs. Hence, to date, the optimal PFM training regimen for achieving continence remains unknown and the following questions persist: how often should women attend PFM training sessions and how many contractions should they perform for maximal effect?

Is a regimen of strengthening exercises better than a motor control strategy or functional retraining? Is it better to administer a PFM training regimen to an individual or are group sessions equally effective, or better? Which is better, PFM training by itself or in combination with biofeedback, neuromuscular electrical stimulation, and/or vaginal cones? Should we use improvement or cure as the ultimate outcome to determine which regimen is the best? The questions are endless[15].

Feedback or biofeedback may provide benefit in addition to pelvic floor muscle training in women with urinary incontinence. However, further research is needed to differentiate whether it is the feedback or biofeedback that causes the beneficial effect or some other difference between the trial arms (such as more contact with health professionals)[16]. The two most recent Cochrane reviews on pelvic muscle exercises for urinary incontinence were focused on stress urinary incontinence (SUI). Physical therapy has been shown to be an effective therapy for SUI[17]. There is also some evidence that biofeedback is effective for Urge Urinary Incontinence (UUI) [17;18]. The included trials that combined pelvic floor muscle exercises with urge and/or frequency suppression strategies, adjuncts to pelvic floor muscle exercises such as biofeedback and vaginal weights, or pelvic floor muscle stimulation through vaginal electrical stimulation or magnetic therapy. There were found only three randomized controlled trials involving 401 women with UUI and MUI evaluated the efficacy of PME with biofeedback. Upon review of these trials, substantial variability of reported outcome measures and follow-up intervals existed. All studies reported significant reduction in UUI as compared to before treatment. Biofeedback treatment was associated with high patient satisfaction. Pelvic floor muscle strength was significantly increased with the biofeedback group but was not significantly different from the group that only received PME. The potential for study- level bias exists as none of these studies had adequate allocation concealment or blinding of subjects, therapists, or assessors. Although the outcomes measures for these trials were systematic measured, outcome bias may also be present [17;19;20] .

**Conclusions** We know that EMG registration with biofeedback is effective in the treatment of pelvic floor dysfunctions. However more randomized controlled trials are warranted with standardized treatment protocols and control groups and with the same equipment, in order to get more uniformity in diagnosis and treatment of pelvic floor dysfunctions. Followed by the possibility to compare different studies, which is impossible at this moment. With the validation study of the MAPLe we hope to contribute to make pelvic floor physiotherapy more evidence based. There is a need

for well-designed randomized controlled trials with adequate sample sizes, validated outcome measures and long-term follow-up. In particular, studies should assess the effectiveness of different components of the package of care often called 'biofeedback'.

### Reference List

- (1) Podnar S, Vodusek DB. Protocol for clinical neurophysiologic examination of the pelvic floor. *Neurourol Urodyn* 2001; 20:669-682.
- (2) Vodusek DB. The role of electrophysiology in the evaluation of incontinence and prolapse. *Curr Opin Obstet Gynecol* 2002; 14:509-514.
- (3) Bo K, Sherburn M. Evaluation of female pelvic-floor muscle function and strength. *Phys Ther* 2005; 85:269-282.
- (4) Voorham-van der Zalm PJ, Voorham JC, van den Bos TW, Ouwerkerk TJ, Putter H, Wasser MN, Webb A, Deruiter MC, Pelger RC. Reliability and differentiation of pelvic floor muscle electromyography measurements in healthy volunteers using a new device: The multiple array probe leiden (MAPLe). *Neurourol Urodyn* 2012.
- (5) Auchincloss CC, McLean L. The reliability of surface EMG recorded from the pelvic floor muscles. *J Neurosci Methods* 2009; 182:85-96.
- (6) Keshwani N, McLean L. Development of a differential suction electrode for improved intravaginal recordings of pelvic floor muscle activity: reliability and motion artifact assessment. *Neurourol Urodyn* 2012; 31:1272-1278.
- (7) Workman DE, Cassisi JE, Dougherty MC. Validation of surface EMG as a measure of intravaginal and intra-abdominal activity: implications for biofeedback-assisted Kegel exercises. *Psychophysiology* 1993; 30:120-125.
- (8) Luginbuehl H, Greter C, Gruenenfelder D, Baeyens JP, Kuhn A, Radlinger L. Intra-session test-retest reliability of pelvic floor muscle electromyography during running. *Int Urogynecol J* 2013.
- (9) Auchincloss C, McLean L. Does the presence of a vaginal probe alter pelvic floor muscle activation in young, continent women? *J Electromyogr Kinesiol* 2012; 22:1003-1009.
- (10) Grape HH, Dederling A, Jonasson AF. Retest reliability of surface electromyography on the pelvic floor muscles. *Neurourol Urodyn* 2009; 28:395-399.
- (11) Glazer HI, Romanzi L, Polaneczky M. Pelvic floor muscle surface electromyography. Reliability and clinical predictive validity. *J Reprod Med* 1999; 44:779-782.
- (12) Both S, van LR, Weijnenborg P, Laan E. A new device for simultaneous measurement of pelvic floor muscle activity and vaginal blood flow: a test in a nonclinical sample. *J Sex Med* 2012; 9:2888-2902.
- (13) Voorham-van der Zalm PJ, Pelger RC, van Heeswijk-Faase IC, Elzevier HW, Ouwerkerk TJ, Verhoef J, Nijeholt GA. Placement of probes in electrostimulation and biofeedback training in pelvic floor dysfunction. *Acta Obstet Gynecol Scand* 2006; 85:850-855.
- (14) Dumoulin C, Hay-Smith J. Pelvic floor muscle training versus no treatment, or inactive control treatments, for urinary incontinence in women. *Cochrane Database Syst Rev* 2010;CD005654.
- (15) Dumoulin C, Glazener C, Jenkinson D. Determining the optimal pelvic floor muscle training regimen for women with stress urinary incontinence. *Neurourol Urodyn* 2011; 30:746-753.
- (16) Herderschee R, Hay-Smith EJ, Herbison GP, Roovers JP, Heineman MJ.

Feedback or biofeedback to augment pelvic floor muscle training for urinary incontinence in women. *Cochrane Database Syst Rev* 2011;CD009252.

(17) Greer JA, Smith AL, Arya LA. Pelvic floor muscle training for urgency urinary incontinence in women: a systematic review. *Int Urogynecol J* 2012; 23:687-697.

(18) Berghmans B, van Waalwijk van DE, Nieman F, de BR, van den Brandt P, Van KP. Efficacy of physical therapeutic modalities in women with proven bladder overactivity. *Eur Urol* 2002; 41:581-587.

(19) Burgio KL, Goode PS, Locher JL, Umlauf MG, Roth DL, Richter HE, Varner RE, Lloyd LK. Behavioral training with and without biofeedback in the treatment of urge incontinence in older women: a randomized controlled trial. *JAMA* 2002; 288:2293-2299.

(20) Wang AC, Wang YY, Chen MC. Single-blind, randomized trial of pelvic floor muscle training, biofeedback-assisted pelvic floor muscle training, and electrical stimulation in the management of overactive bladder. *Urology* 2004; 63:61-66.



# Ultrasound

Dr Jennifer Kruger, PhD.  
Postdoctoral Fellow  
Auckland Bioengineering Institute  
University of Auckland, Auckland  
New Zealand  
j.kruger@auckland.ac.nz

## Background/Constituents

The term 'Ultrasound' refers to very high frequency sound waves (>2MHz). The soundwaves are longitudinal compression waves which are modified by the medium through which they travel. The denser the material the faster the sound will travel. *Acoustic impedance* is a term which describes the difference in properties between two contiguous structures. The higher the acoustic impedance; the brighter the image. Bone has high acoustic impedance, producing a bright or hyperechoic image. Water and fat have a low acoustic impedance thus the image appears darker hypoechoic or anechoic. Images are produced in shades of gray on a black background, known as grayscale or B mode imaging. The soundwaves are generated from the transducer head which also then records echoes from structures which they encounter<sup>1</sup>.

### 1.1 Transducers:

The transducer heads differ mainly by how the crystals are arranged within it i.e. annular array, linear array, curvilinear, etc., which in turn influences the depth, angle of penetration and field of view of sound waves. The crystals are piezoelectric elements which vibrate when subjected to electrical stimulation. Temporal characteristics of send/receive cycle in transducer allows for real time images(4D) to be produced. Different transducers are used for different imaging tasks: Obstetric and abdominal ultrasound: 2-5MHz curved array transducer, or transvaginal probes with a frequency of  $\geq 5$ MHz. 3.5-7MHz with a wide field of view are used for 3D imaging. Linear array transducers tend to be used for abdominal scanning.

### 1.2 Ultrasound machines:

There are many different varieties and abilities of ultrasound machines, from simple 2D (B mode) imaging to very expensive machines which integrate image planes to produce rendered volume images and allow acquisition of 'cine loops'. The image produced on the screen consists of multiple scan lines, which can be adjusted by adjusting the frame rate. Optimal real time imaging relies on high frame rates. Certain elements of the image can be adjusted on the screen; most commonly using the 'depth' button which allows deeper structures to be visualized by often with a loss of resolution. The gain button adjusts the brightness of the image, and 'focus' allows the focusing on a particular area. The more complicated the machine, the more you are able to manipulate the image. It is important that you know the characteristics of the ultrasound machine that you are using to optimize the image. Many ultrasound machines also have the ability to analyse images off line, using specialized software.

## 2. Methodology:

Ultrasound has been available for many years, although other imaging modalities such as computed tomography, and MRI have also been used to evaluate the pelvic floor. The

advantage of ultrasound is that there is no ionizing radiation, it is cost effective and easy to use. Off line analysis has also hugely increased accessibility.

## 2.1 Abdominal ultrasound

Abdominal ultrasound can be used to assess pf muscle activation (<sup>2-4</sup>). The equipment requirements are less than that of 3/4D ultrasound: US machine needs cine loop capabilities and a 3-5MHz curved array transducer can be used (most commonly used transducer for abdominal work).

Patient can be imaged supine, crook lying or standing <sup>2</sup>. A comfortably full bladder is recommended in order to visualize movement of the posterior wall of the bladder. The mid-sagittal orientation of the transducer has shown better reliability than the transverse orientation for assessment of bladder base displacement<sup>3</sup>. Transducer is placed suprapubically angled in a 15-30% angle from the vertical. The posterior bladder should be clearly visible. Check that the patient can perform an adequate contraction first before commencing measurements. A marker is made on the screen using the 'at rest' image, (dual screen) then on maximum contraction the corresponding image is frozen. The distance from at rest position to the contracted position of the posterior bladder wall can be measured using on line calipers.

This method has shown good inter-rater reliability 0.86-0.88<sup>3</sup>, however there are several caveats:

- There is no bony reference, so the actual distance that the bladder moves is not relative to a fixed anatomical point.
- The bladder wall is a surrogate for pelvic floor muscle – it is not the muscle
- Movement of the bladder may be confounded by abdominal wall activation –
- Functionality best assessed with TPU<sup>4</sup>.

Nonetheless, this method is easy, there is no need for fancy machines and it is useful for biofeedback. It is also possible to assess increases in bladder base lift pre and post physio treatment.

## 2.2 Transperineal ultrasound(TPU)

Transperineal ( translabial) or transvaginal ultrasound is the most common method for investigating pelvic floor disorders<sup>5</sup>. This approach enables the entire pelvic floor muscle area to be visualized, and if using a 3D ultrasound machine, the boundaries of the muscle can be seen in the axial orientation – previously the domain of Magnetic resonance imaging.

### 2.2.1 2D/B Mode ultrasound imaging

Usually readily available, easy. Only need a simple machine with cine loop capabilities, and a 3.5- to 6-MHz curved array transducer. Patient is usually examined in the supine position, knees comfortably flexed after voiding. The transducer is covered in a glove or condom for hygienic reasons. Ultrasound gel applied to the transducer then placed firmly on the perineum in the midsagittal orientation (Fig 1). Still widely used<sup>5-7</sup>



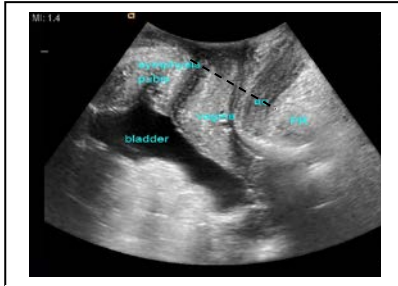


Figure 1: 2D Pelvic floor ultrasound. AC- anal canal, PR- puborectalis muscle. Dotted line =AP diameter of hiatus

### Clinical use of 2D ultrasound

- Measure the anterior-posterior diameter from edge of symphysis pubis to ano-rectal angle at rest, on contraction and on valsalva
- Assess residual bladder volume (apxtransversex5.6)
- Assess movement of the bladder neck during cough and valsalva ( cine loop)
- Assess activation ( or not) of the pelvic floor muscle prior to cough
- Assess any damage to insertion site of the puborectalis muscle. ( easier on 3D imaging)

Reliability of 2D ultrasound ranges from (ICC - 0.93 for PPMC) and (ICC 0.87 on valsalva maneuver)<sup>8</sup>. However, if you are going to use transperineal ultrasound, and have access to a 3D probe then it useful to use 3/4D function in order to visualize the anatomy in the axial plane.

### 2.2.2 3D/4D Ultrasound

3D ultrasound popularized by obstetric scanning – proved very suitable for pelvic floor muscles. Involves the integration of 2D sectional images into rendered volume images, and allow access to the axial plane<sup>5</sup>. Require a minimum of a curved array volume transducer (8-4MHz) with a wide angle of acquisition ( $\geq 70^\circ$ ). Protocol as for 2D. Use the symphysis pubis as reference point during movement.

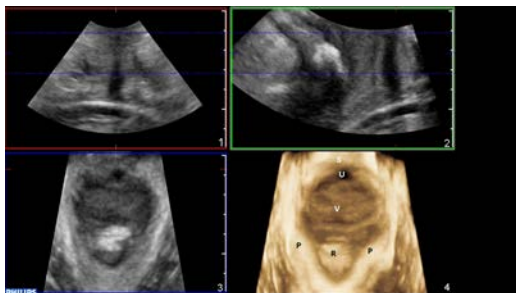
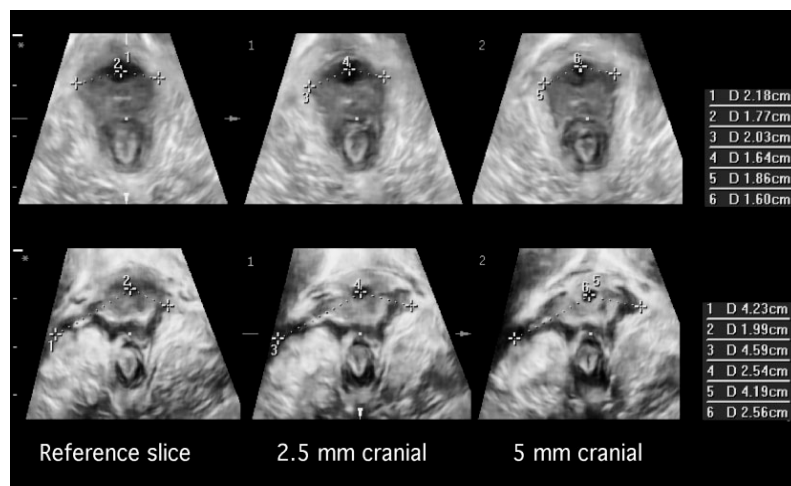


Figure 2: Standard acquisition screen of 3D pelvic floor image 1, Coronal, 2, Midsagittal, and 3, axial planes and 4, rendered axial plane (ie, semitransparent representation of all pixels in box [region of interest] seen in 1- 2). P, puborectalis muscle; R, rectum, S, symphysis pubis; U, urethra; V, vagina.

### Clinical use of 3D/4D ultrasound

- Measure hiatal biometry: ap diameter, transverse diameter and hiatal area at rest, on contraction and valsalva.
- Highly reproducible<sup>9-11</sup>
- Able to look for signs of levator damage using tomographic imaging(TUI) (Figure 3)
- Published protocol's on how to identify avulsion using TUI<sup>12</sup>
- Measurement of the urethral-levator gap ( $>2.5\text{cm}$ ) in the central three slices – diagnostic for damage(Fig 4)<sup>13</sup> Robust measurement, very unlikely to result in false positives<sup>14</sup> –



Advantages:

- Proved reliable, and reproducible in the measuring functionality of the pelvic floor
- Access the axial plane - visualize the entire pf muscle.
- Ability to use tomographic imaging – determine muscle injury (may affect your treatment)
- Able to measure pelvic organ descent on valsalva – determination of prolapse
- Off line processing and ability to share images and volumes – increased accessibility

Disadvantages:

- Need a 3/4D capable ultrasound machine
- More uncomfortable than abdominal ultrasound
- Probably requires more time to learn how to acquire images

## References:

1. Chudleigh T, Thilaganathan B, editors. *Obstetric Ultrasound. How, Why and When*. Third ed. Edinburgh: Elsevier, 2004.
2. Frawley HC, Galea MP, Phillips BA, Sherburn M, Bo K. Effect of test position on pelvic floor muscle assessment. *Int Urogynecol J Pelvic Floor Dysfunct* 2006;17(4):365-71.
3. Sherburn M, Murphy CA, Carroll S, Allen TJ, Galea MP. Investigation of transabdominal real-time ultrasound to visualise the muscles of the pelvic floor. *Aust J Physiother* 2005;51(3):167-70.
4. Thompson JA, O'Sullivan PB, Briffa NK, Neumann P. Comparison of transperineal and transabdominal ultrasound in the assessment of voluntary pelvic floor muscle contractions and functional manoeuvres in continent and incontinent women. *Int Urogynecol J Pelvic Floor Dysfunct* 2007;18(7):779-86.
5. Dietz HP. Pelvic floor ultrasound: a review. *Am J Obstet Gynecol* 2010;202(4):321-34.
6. Athanasiou S, Chaliha C, Tooze-Hobson P, Salvatore S, Khullar V, Cardozo L. Direct imaging of the pelvic floor muscles using two-dimensional ultrasound: a comparison of women with urogenital prolapse versus controls. *BJOG: An International Journal of Obstetrics and Gynaecology* 2007;114(7):882-88.
7. Costantini S, Nadalini C, Esposito F, Valenzano MM, Risso D, Lantieri P, et al. Perineal ultrasound evaluation of the urethrovesical junction angle and urethral mobility in nulliparous women and women following vaginal delivery. *Int Urogynecol J Pelvic Floor Dysfunct* 2005;16(6):455-9.
8. Thompson JA, O'Sullivan PB, Briffa K, Neumann P, Court S. Assessment of pelvic floor movement using transabdominal and transperineal ultrasound. *Int Urogynecol J Pelvic Floor Dysfunct* 2005;16(4):285-92.
9. Yang SH, Huang WC, Yang SY, Yang E, Yang JM. Validation of new ultrasound parameters for quantifying pelvic floor muscle contraction. *Ultrasound in Obstetrics & Gynecology* 2009;33(4):465-71.
10. Braekken IH, Majida M, Ellstrom-Eng M, Dietz HP, Umek W, Bo K. Test-retest and intra-observer repeatability of two-, three- and four-dimensional perineal ultrasound of pelvic floor muscle anatomy and function. *Int Urogynecol J Pelvic Floor Dysfunct* 2008;19(2):227-35.
11. Braekken IH, Majida M, Eng ME, Bo K. Test-retest reliability of pelvic floor muscle contraction measured by 4D ultrasound. *Neurourol Urodyn* 2009;28(1):68-73.
12. Dietz HP, Bernardo MJ, Kirby A, Shek KL. Minimal criteria for the diagnosis of avulsion of the puborectalis muscle by tomographic ultrasound. *Int Urogynecol J* 2011;22(6):699-704.
13. Dietz HP, Abbu A.K., Shek L. The levator-urethra gap measurement: a more objective means of determining levator avulsion? *Ultrasound in Obstetrics and Gynecology* 2008;32(7):941-45.
14. Adisuroso T, Shek KL, Dietz HP. Tomographic ultrasound imaging of the pelvic floor in nulliparous pregnant women: limits of normality. *Ultrasound Obstet Gynecol* 2012;39(6):698-703.
15. Delancey JO, Kane Low L, Miller JM, Patel DA, Tumbarello JA. Graphic integration of causal factors of pelvic floor disorders: an integrated life span model. *American Journal of Obstetrics & Gynecology* 2008;199(6):610.e1-5.
16. Smith FJ, Holman CD, Moorin RE, Tsokos N. Lifetime risk of undergoing surgery for pelvic organ prolapse. *Obstet Gynecol* 2010;116(5):1096-100.
17. DeLancey JO, Morgan DM, Fenner DE, Kearney R, Guire K, Miller JM, et al. Comparison of levator ani muscle defects and function in women with and without pelvic organ prolapse. *Obstet Gynecol* 2007;109(2 Pt 1):295-302.
18. Dietz HP, Simpson JM. Levator trauma is associated with pelvic organ prolapse. *BJOG* 2008;115(8):979-84.
19. De Leon J, Steensma AB, Shek C, Dietz HP. Ballooning: Can we define pathological distensibility of the levator hiatus? *Ultrasound in Obstetrics and Gynecology* 2007;30:447.

20. Braekken IH, Majida M, Ellstrom Engh M, Holme IM, Bo K. Pelvic floor function is independently associated with pelvic organ prolapse. *BJOG* 2009;116(13):1706-14.
21. Dannecker C, Antherbur C. The effects of childbirth on the pelvic floor. *Journal of Perinatal medicine* 2000;28(3):175-84.
22. Dietz H, Lanzarone V. Levator Trauma After Vaginal Delivery. *Obstetrics & Gynecology* 2005;106(4):707-12.
23. Dimpfl T, Jaeger C, Mueller-Felber W, Anthuber C, Hirsch A, Brandmaier R, et al. Myogenic changes of the levator ani muscle in premenopausal women: the impact of vaginal delivery and age. *Neurourology & Urodynamics* 1998;17(3):197-205, .
24. Hilde G, Staer-Jensen J, Siafarikas F, Engh ME, Braekken IH, Bo K. Impact of childbirth and mode of delivery on vaginal resting pressure and on pelvic floor muscle strength and endurance. *Am J Obstet Gynecol* 2013;208(1):50 e1-7.
25. Kearney R, Miller JM, Ashton-Miller JA, DeLancey JO. Obstetric factors associated with levator ani muscle injury after vaginal birth. *Obstetrics & Gynecology* 2006;107(1):144-9.
26. Li X, Kruger JA, Nash MP, Nielsen PM. Modeling childbirth: elucidating the mechanisms of labor. *Wiley Interdiscip Rev Syst Biol Med* 2010;2(4):460-70.
27. Shek KL, Dietz HP. The effect of childbirth on hiatal dimensions. *Obstet Gynecol* 2009;113(6):1272-8.
28. Toozs-Hobson P, Balmforth J, Cardozo L, Khullar V, Athanasiou S. The effect of mode of delivery on pelvic floor functional anatomy. *International Urogynecology Journal* 2008;19(3):407-16.
29. Braekken IH, Majida M, Engh ME, Bo K. Can pelvic floor muscle training reverse pelvic organ prolapse and reduce prolapse symptoms? An assessor-blinded, randomized, controlled trial. *Am J Obstet Gynecol* 2010;203(2):170 e1-7.
30. Hagen S, Stark D. Conservative prevention and management of pelvic organ prolapse in women. *Cochrane Database Syst Rev* 2011(12):CD003882.

## Digital Palpation to Imaging: How Do or Should Pelvic-Floor-Muscle Evaluation Tools Influence Physiotherapy Practice?

### MRI evaluation as a tool to measure pelvic-floor-muscle function

Chantale Dumoulin

Associate Professor and Researcher

Urogynecological Health and Aging Canadian Research Chair, Holder

School of rehabilitation, Faculty of Medicine

University of Montreal, CANADA

[Chantal.dumoulin@umontreal.ca](mailto:Chantal.dumoulin@umontreal.ca)

### Aims of this topic:

1. To present the magnetic resonance imaging (MRI) evaluation technique used to measure pelvic-floor-muscle (PFM) function.
2. To present the PFM MRI measurements used to assess PFM morphology (a) at rest, (b) during an active pelvic floor contraction, and (c) a Valsalva manoeuvre.
3. To discuss how pelvic floor MRI evaluation compares with other PFM assessment tools.
4. To present and discuss the advantages and limitations of the digital evaluation technique.

### Pelvic floor muscle MRI:

This section presents the pelvic-floor-muscle MRI technique, a relatively new imaging technique that provides an excellent visual image of the PFM, the bladder and urethral anatomy in women. Two types of pelvic floor MRI acquisition will be discussed: static (a high-resolution acquisition showing the morphology at rest) and dynamic /cine view (a low-resolution acquisition that shows structural displacements on movement).

Pelvic-floor-muscle MRI measurements include those taken from the sagittal plane (the pubococcygeal line, the anorectal angle, H-line, M-line, PCL/H-line angle, ureterovesical (UV) junction height, uterocervical junction height, UV junction approximation, bladder neck funneling occurrence [yes/no], funneling width, funneling length, and posterior UV angle) and the axial plane (the hiatus length, hiatus width, and striated urethral sphincter morphology, both inner and outer diameters).

### MRI advantages:

- 1- Less invasive than other imaging techniques
- 2- Reliable imaging technique with good psychometric properties
- 3- Not operator-dependant
- 4- Fewer artefacts due to operator movements

- 5- High resolution images and good contrasts without anatomical distortions
- 6- No ionizing radiation (magnetic field)
- 7- No probes are needed, only a pelvic coil centered on the pubis
- 8- The three compartments and two bony references are visible simultaneously
- 9- Multi-plane: axial, sagittal and coronal
- 10- 3D reconstruction modeling
- 11- Static (physiologic state) and dynamic assessments are possible

#### MRI disadvantages:

- 1- Does not allow for real-time function tasks (e.g., cough tasks)
- 2- Cannot be used as a biofeedback tool
- 3- Expensive
- 4- Most units designed for non-physiological positioning (supine). However, studies show that the supine position is effective for evaluate PFM morphology and function.

Discussion and presentation of the psychometric properties of the MRI morphological measurements and how these correlate with other PFM assessments. MRI has been used to study normal and abnormal female PFM morphology at rest, during a PFM contraction and during Valsalva manoeuvres. Parameters such as PFM volume, shape, integrity and displacement have been shown to differ between continent and incontinent young and middle-aged women; hence, will be reviewed. Finally, the changes in PFM morphology following PFM rehabilitation will be presented.

#### References:

Artibani, W. and M. A. Cerruto (2005). "The role of imaging in urinary incontinence." BJU International 95(5): 699-703.

Dumoulin C, Peng Q, Stodkilde-Jorgensen H, Shishido K, Constantinou C. *Changes in levator ani anatomical configuration following physiotherapy in women with stress urinary incontinence*. Journal of Urology 2007;178 , 970-977; quiz 1129.

Fielding, J. R., D. J. Griffiths, et al. (1998). "MR imaging of pelvic floor continence mechanisms in the supine and sitting positions." AJR Am J Roentgenol 171(6): 1607-1610.

Fielding JR. *Practical MR imaging of female pelvic floor weakness*. Radiographics. 2002;22:295-304.

Handa VL, Lockhart ME, Kenton KS, Bradley CS, Fielding JR, Cundiff GW, et al. *Magnetic resonance assessment of pelvic anatomy and pelvic floor disorders after childbirth*. International Urogynecology Journal and Pelvic Floor Dysfunction. 2009;20(2):133-9. Epub 2008/10/11.

Handa, V. L., M. E. Lockhart, et al. (2008). "Racial differences in pelvic anatomy by magnetic resonance imaging." Obstet Gynecol 111(4): 914-920.

Haylen B. *An International Urogynecological Association (IUGA)/International Continence Society*

(ICS) Joint Report on the Terminology for Female Pelvic Floor Dysfunction. [Neurourol Urodyn.](#) 2010;29(1):4-20.

Hoyte, L., L. Schierlitz, et al. (2001). "Two- and 3-dimensional MRI comparison of levator ani structure, volume, and integrity in women with stress incontinence and prolapse." [Am J Obstet Gynecol](#) 185(1): 11-19.

Kirschner-Hermanns, R., B. Wein, et al. (1993). "The contribution of magnetic resonance imaging of the pelvic floor to the understanding of urinary incontinence." [Br J Urol](#) 72(5 Pt 2): 715-718.

Law YM, Fielding JR. MRI of pelvic floor dysfunction: review. [American Journal of Roentgenology.](#) 2008 Dec;191(6 Suppl):S45-53.

Lockhart ME, Fielding JR, Richter HE, Brubaker L, Salomon CG, Ye W, et al. *Reproducibility of dynamic MR imaging pelvic measurements: a multi-institutional study.* [Radiology.](#) 2008;249(2):534-40. Epub 2008/09/18.

Macura, K. J. (2006). "Magnetic resonance imaging of pelvic floor defects in women." [Top Magn Reson Imaging](#) 17(6): 417-426.

Maddill, A. Tang, S. Pontbriand-Drolet, C. Dumoulin. *Comparison of Two Methods for Measuring the Pubococcygeal Line from Sagittal-Plane Magnetic Resonance Imaging.* [Neurourology and Urodynamics](#) 2011 Nov;30(8):1613-9.

Madill S, Tang A, Pontbriand-Drolet S, Dumoulin C. *Pelvic floor exercise classes for urinary incontinence in older women: How do they work.* Discussion Poster Presentation International Continence Society Congress. Glasgow, UK, September 2011. [Neurourology & Urodynamics.](#) 2011;29(6): 141.

Pontbriand Drolet S, Madill S, Tang A, Dumoulin C. *Pelvic floor morphology in older continent and urinary incontinent women: An MRI study.* Oral and poster presentation, Joint ICS-IUGA Annual Meeting, Toronto, Canada. Aug. 2010, [Neurourology & Urodynamics.](#)2010 29(6): 141.

Unterweger, M., B. Marincek, et al. (2001). "Ultrafast MR imaging of the pelvic floor." [AJR Am J Roentgenol](#) 176(4): 959-963.

Tubaro, A., W. Artibani, et al. (2009). *Imaging and Others Investigations. Incontinence 4th Edition.* P. Abrams, L. Cardozo, S. Khoury and A. Wein. Paris, Health Publication Ltd: 541-630.

Unger, C. A., M. M. Weinstein, et al. (2011). "Pelvic floor imaging." [Obstet Gynecol Clin North Am](#) 38(1): 23-43, vii.

Vanbeckevoort, D., L. Van Hoe, et al. (1999). "Pelvic floor descent in females: comparative study of colposcystodefecography and dynamic fast MR imaging." [J Magn Reson Imaging](#) 9(3): 373-377.

Woodfield, C. A., S. Krishnamoorthy, et al. (2010). "Imaging pelvic floor disorders: trend toward comprehensive MRI." [AJR Am J Roentgenol](#) 194(6): 1640-1649.

**Digital Palpation to Imaging: How Do or Should Pelvic-Floor-Muscle  
Evaluation Tools Influence Physiotherapy Practice?**

**Topic: How do PFM evaluation tools influence clinical practice for urinary incontinence?**

Chantale Dumoulin

Associate Professor and Researcher

Urogynecological health and Aging Canadian Research Chair, Holder

School of rehabilitation, Faculty of Medicine

University of Montreal, Canada

[Chantal.dumoulin@umontreal.ca](mailto:Chantal.dumoulin@umontreal.ca)

Aims of this topic:

1. To discuss the known body of evidence on the relationships between pelvic floor morphological deficit and dysfunction and aging.
2. To present the known body of evidence on the relationships between pelvic floor morphological deficit and dysfunction and urinary incontinence (UI) symptomatology.
3. To review the known body of evidence on the relationships between pelvic floor morphological deficit and dysfunction and diagnosis and outcome predictions for UI.
4. To examine the impact of PFM evaluation literature on treatment choices (types of exercises) for treating patients with UI.



Dr Jennifer Kruger, PhD.  
Postdoctoral Fellow  
Auckland Bioengineering Institute  
University of Auckland, Auckland  
New Zealand  
j.kruger@auckland.ac.nz

## How do or should PFM evaluation tools influence clinical practice for POP?

### Pelvic organ prolapse (POP)

- Epidemiological studies have defined statistical associations between prolapse and identified risk factors, including: (i) sustained increases in abdominal pressure; (ii) loss of muscle function; and (iii) increases in size of the hiatus<sup>15</sup>.
- POP is a common condition – reports of 20% women will require surgery<sup>16</sup>
- Surgery – controversial, costly and with high recurrence rates.

Symptoms include:

- Lump/dragging sensation in the vagina
- Feeling like ‘something is coming out’
- Can be felt digitally on valsalva (POP\_Q)

### Evidence of morphological change associated with POP

No definitive cause of POP> but unequivocal evidence from imaging studies that damage to the levator ani (pelvic floor muscle) is strongly correlated to prolapse. 55% of women who presented with prolapse (>stage2) had damage ‘major’ damage to the levator ani muscle from MR images-corroborated by ultrasound imaging development<sup>17 18</sup>.

Associated morphological changes include:

- Enlargement of the levator hiatus at rest and on valsalva (>25cm<sup>2</sup>)<sup>19</sup>
- Decrease in PFM strength<sup>20</sup>
- Presence of avulsion injury<sup>18</sup>.

These changes are visible using TPU imaging (2D and 3/4D) <sup>5 6</sup>.

*Be aware of confounders:*

- Full bladder/rectum
- Co-activation of levator ani during valsalva

- Ineffective valsalva

TPU Parameters to measure:

- bladder neck descent, hypermobility is often associated with urinary incontinence<sup>5</sup> (cystocele)
- Funnelling of the bladder neck also indicative of leakage (not always though)
- Uterine descent (enterocele)
- Descent of the rectal ampulla (rectocele)
- Hiatal biometry

Insert images

### PFM's pre and post vaginal delivery

Vaginal birth is significantly implicated in the development of levator ani trauma<sup>21-25</sup>

A woman who has had 4 children is 8x more likely to present with symptoms of prolapse that require correction<sup>15</sup>.

Stretch of the PFM is significant during vaginal birth – up to 3X normal length – would be injurious for other skeletal muscle<sup>26</sup>.

Inevitable that there will morphological changes associated with the physiology of childbirth. Most cases – the anatomy and physiology will be able to return to a functional state.

Evidence pre and post delivery shows changes in all measured parameters of the PFM.<sup>24</sup> General decrease in PFM strength and resting pressure<sup>24</sup>. Increase in PFM hiatal area post partum (more so in women with avulsion)<sup>27 28</sup>.

### Outcome prediction and physiotherapy for prolapse

Recent evidence that target physiotherapy may be effective for treatment of early stage prolapse:

Braekken et al (2010) RCT (109 women 59 PFMT and 50 controls)

Target pelvic floor muscle training (PFMT) improved outcome measures of prolapse including measures on ultrasound:

- Bladder neck elevation and elevation of the rectal ampulla improved
- PFM strength also improved in treatment group
- PFMT group felt their symptoms improved.

PFMT – intensive (6/12mths). 1x a week for first 3/12mths the 1x fortnight for second 3/12

Measures were done immediately post intervention<sup>29</sup>

Cochrane review (2011) –

- Some evidence of positive effect for PFMT on prolapse symptoms and severity.
- No evidence yet on the effectiveness of different intensity of PFMT
- No evidence yet on the benefit of combining PFMT before surgery<sup>30</sup>

Ultrasound is a useful tool to aid with biofeedback and diagnosis of pelvic floor muscle dysfunction. Can help determine treatment options and as a reliable outcome measure for that treatment.

References:

1. Chudleigh T, Thilaganathan B, editors. *Obstetric Ultrasound. How, Why and When*. Third ed. Edinburgh: Elsevier, 2004.
2. Frawley HC, Galea MP, Phillips BA, Sherburn M, Bo K. Effect of test position on pelvic floor muscle assessment. *Int Urogynecol J Pelvic Floor Dysfunct* 2006;17(4):365-71.
3. Sherburn M, Murphy CA, Carroll S, Allen TJ, Galea MP. Investigation of transabdominal real-time ultrasound to visualise the muscles of the pelvic floor. *Aust J Physiother* 2005;51(3):167-70.
4. Thompson JA, O'Sullivan PB, Briffa NK, Neumann P. Comparison of transperineal and transabdominal ultrasound in the assessment of voluntary pelvic floor muscle contractions and functional manoeuvres in continent and incontinent women. *Int Urogynecol J Pelvic Floor Dysfunct* 2007;18(7):779-86.
5. Dietz HP. Pelvic floor ultrasound: a review. *Am J Obstet Gynecol* 2010;202(4):321-34.
6. Athanasiou S, Chaliha C, Toozs-Hobson P, Salvatore S, Khullar V, Cardozo L. Direct imaging of the pelvic floor muscles using two-dimensional ultrasound: a comparison of women with urogenital prolapse versus controls. *BJOG: An International Journal of Obstetrics and Gynaecology* 2007;114(7):882-88.
7. Costantini S, Nadalini C, Esposito F, Valenzano MM, Risso D, Lantieri P, et al. Perineal ultrasound evaluation of the urethrovesical junction angle and urethral mobility in nulliparous women and women following vaginal delivery. *Int Urogynecol J Pelvic Floor Dysfunct* 2005;16(6):455-9.
8. Thompson JA, O'Sullivan PB, Briffa K, Neumann P, Court S. Assessment of pelvic floor movement using transabdominal and transperineal ultrasound. *Int Urogynecol J Pelvic Floor Dysfunct* 2005;16(4):285-92.
9. Yang SH, Huang WC, Yangs SY, Yang E, Yang JM. Validation of new ultrasound parameters for quantifying pelvic floor muscle contraction. *Ultrasound in Obstetrics & Gynecology* 2009;33(4):465-71.
10. Braekken IH, Majida M, Ellstrom-Eng M, Dietz HP, Umek W, Bo K. Test-retest and intra-observer repeatability of two-, three- and four-dimensional perineal ultrasound of pelvic floor muscle anatomy and function. *Int Urogynecol J Pelvic Floor Dysfunct* 2008;19(2):227-35.
11. Braekken IH, Majida M, Eng ME, Bo K. Test-retest reliability of pelvic floor muscle contraction measured by 4D ultrasound. *Neurourol Urodyn* 2009;28(1):68-73.
12. Dietz HP, Bernardo MJ, Kirby A, Shek KL. Minimal criteria for the diagnosis of avulsion of the puborectalis muscle by tomographic ultrasound. *Int Urogynecol J* 2011;22(6):699-704.
13. Dietz HP, Abbu A.K., Shek, L. The levator-urethra gap measurement: a more objective means of determining levator avulsion? *Ultrasound in Obstetrics and Gynecology* 2008;32(7):941-45.
14. Adisuroso T, Shek KL, Dietz HP. Tomographic ultrasound imaging of the pelvic floor in nulliparous pregnant women: limits of normality. *Ultrasound Obstet Gynecol* 2012;39(6):698-703.

15. Delancey JO, Kane Low L, Miller JM, Patel DA, Tumbarello JA. Graphic integration of causal factors of pelvic floor disorders: an integrated life span model. *American Journal of Obstetrics & Gynecology* 2008;199(6):610.e1-5.
16. Smith FJ, Holman CD, Moorin RE, Tsokos N. Lifetime risk of undergoing surgery for pelvic organ prolapse. *Obstet Gynecol* 2010;116(5):1096-100.
17. DeLancey JO, Morgan DM, Fenner DE, Kearney R, Guire K, Miller JM, et al. Comparison of levator ani muscle defects and function in women with and without pelvic organ prolapse. *Obstet Gynecol* 2007;109(2 Pt 1):295-302.
18. Dietz HP, Simpson JM. Levator trauma is associated with pelvic organ prolapse. *BJOG* 2008;115(8):979-84.
19. De Leon J, Steensma AB, Shek C, Dietz HP. Ballooning: Can we define pathological distensibility of the levator hiatus? *Ultrasound in Obstetrics and Gynecology* 2007;30:447.
20. Braekken IH, Majida M, Ellstrom Eng H M, Holme IM, Bo K. Pelvic floor function is independently associated with pelvic organ prolapse. *BJOG* 2009;116(13):1706-14.
21. Dannecker C, Antherbur C. The effects of childbirth on the pelvic floor. *Journal of Perinatal medicine* 2000;28(3):175-84.
22. Dietz H, Lanzarone V. Levator Trauma After Vaginal Delivery. *Obstetrics & Gynecology* 2005;106(4):707-12.
23. Dimpfl T, Jaeger C, Mueller-Felber W, Anthuber C, Hirsch A, Brandmaier R, et al. Myogenic changes of the levator ani muscle in premenopausal women: the impact of vaginal delivery and age. *Neurourology & Urodynamics* 1998;17(3):197-205, .
24. Hilde G, Staer-Jensen J, Siafarikas F, Eng ME, Braekken IH, Bo K. Impact of childbirth and mode of delivery on vaginal resting pressure and on pelvic floor muscle strength and endurance. *Am J Obstet Gynecol* 2013;208(1):50 e1-7.
25. Kearney R, Miller JM, Ashton-Miller JA, DeLancey JO. Obstetric factors associated with levator ani muscle injury after vaginal birth. *Obstetrics & Gynecology* 2006;107(1):144-9.
26. Li X, Kruger JA, Nash MP, Nielsen PM. Modeling childbirth: elucidating the mechanisms of labor. *Wiley Interdiscip Rev Syst Biol Med* 2010;2(4):460-70.
27. Shek KL, Dietz HP. The effect of childbirth on hiatal dimensions. *Obstet Gynecol* 2009;113(6):1272-8.
28. Toozs-Hobson P, Balmforth J, Cardozo L, Khullar V, Athanasiou S. The effect of mode of delivery on pelvic floor functional anatomy. *International Urogynecology Journal* 2008;19(3):407-16.
29. Braekken IH, Majida M, Eng ME, Bo K. Can pelvic floor muscle training reverse pelvic organ prolapse and reduce prolapse symptoms? An assessor-blinded, randomized, controlled trial. *Am J Obstet Gynecol* 2010;203(2):170 e1-7.
30. Hagen S, Stark D. Conservative prevention and management of pelvic organ prolapse in women. *Cochrane Database Syst Rev* 2011(12):CD003882.

<p style="text-align: center;"><b>Digital Palpation to Imaging: How Do or Should Pelvic-Floor-Muscle Evaluation Tools Influence Physiotherapy Practice?</b></p>
---

**Topic: How do PFM evaluation tools influence our practice with vulvodynia**

Mélanie Morin, PT, PhD  
Assistant Professor and Researcher  
Étienne-Le Bel Clinical Research Centre  
School of Rehabilitation  
Faculty of Medicine and Health Sciences  
University of Sherbrooke, CANADA  
Melanie.m.morin@usherbrooke.ca

Aims of this topic:

1. To define and describe symptomatology of vulvodynia.
2. To discuss pathophysiological mechanisms of vulvodynia and emphasise the importance of the PFM function.
3. To present the findings in the literature when comparing PFM function in women with and without vulvodynia.
4. To discuss the impact of PFM physiotherapy on the PFM in women with vulvodynia.

Definition and Symptomatology

Vulvodynia is a neglected and important health problem affecting 12 to 21% of women in community samples (Arnold et al. 2006). It is defined as « Vulvar discomfort, most often described as burning pain, occurring in the absence of relevant visible findings or a specific, clinically identifiable, neurologic disorder » by the International Society for the Study of Vulvovaginal Disease (ISSVD) (Moyal-Barracco et al. 2004). Vulvodynia can be categorized into generalized and localized pain. It can be further subdivided into provoked, unprovoked and mixed pain (Moyal-Barracco et al. 2004).

### Pathophysiology

The pathophysiology of vulvodynia remains poorly understood. Several causes have been suggested including embryologic abnormalities (Burrows et al. 2008), genetics or immune factors (Witkin et al. 2002; Witkin et al. 2002; Babula et al. 2004), hormonal factors (Bouchard et al. 2002; Bohm-Starke et al. 2004), and central and peripheral neurogenic changes (Bohm-Starke et al. 1998; Westrom et al. 1998; Pukall et al. 2002; Bornstein et al. 2004). In addition to the biomedical factors, psychosocial variables have been identified (Desrochers et al. 2009; Rosen et al. 2012). Among the different mechanisms, the involvement of the pelvic floor muscles (PFM) has been proposed as a predominant role in several conceptual models (Zolnoun et al. 2006; ter Kuile et al. 2010; Hoffman 2011).

### Implication of the PFM function in women with vulvodynia

Increase in PFM tone is suggested to play an important role in vulvodynia. However, terminology associated with PFM tone lacks standardisation and muscle physiology associated with muscle tone is often not well understood. Simons and Mense (1998) described that general muscle tone in skeletal muscles comprises the measures of the viscoelastic properties of the muscular tissue, physiological contracture (more commonly defined as trigger point), electrogenic spasm (which includes unintentional muscle contraction with or without pain that could be controlled voluntarily) and normal electrogenic contraction (involves resting activity in normally relaxed muscles and also myotatic reflex during stretching).

Electromyography (EMG): Viscoelastic properties and physiological contractures are not detectable using EMG. EMG signals represent electrogenic contraction and spasm. Hence, only a portion of general muscle tone is assessed. The role of the electrogenic component in the pathophysiology of vulvodynia has been shown by comparing women with vulvodynia to asymptomatic controls (White et al. 1997; Glazer et al. 1998; Gentilcore-Saulnier et al. 2010). However, the

results are controversial because some studies found a non-significant difference between the two groups (van der Velde et al. 2001; Engman et al. 2004; Reissing et al. 2004).

Palpation: All the components of general muscle tone evaluation are measured when using palpation. Women with vulvodynia showed higher tonicity and lower flexibility (Reissing et al. 2004; Gentilcore-Saulnier et al. 2010). Although palpation remains a subjective tool, the ability to detect myofascial trigger points represents an important advantage. The assessment of trigger points is important in a pain condition and was demonstrated to play a key role in chronic pelvic pain (Weiss 2001).

Dynamometry : Women with vulvodynia were found to have higher general PFM tone compared to asymptomatic controls (ref). This methodology offers the advantage to assess the PFM during a dynamic stretch.

Ultrasound: PFM morphometry differs in women with and without vulvodynia, suggesting an increase in general muscle tone (Morin et al. 2011). Transperineal ultrasound offers a great advantage in women with pain because it is pain-free (no vaginal insertion is required). Therefore, it was shown that these impairments are not limited to a protective defense reaction to the painful assessment but are rather present chronically.

The importance of parameters other than PFM tone has been shown in the pathophysiology of vulvodynia (Glazer et al. 1998; Reissing et al. 2004; Reissing et al. 2005; Morin et al. 2010). Women with vulvodynia also demonstrated lower PFM strength, rapidity of contraction and endurance (Glazer et al. 1998; Reissing et al. 2004; Reissing et al. 2005; Morin et al. 2010). Therefore, the assessment of the PFM should not be limited to PFM tone.

Impact of PFM physiotherapy on the PFM in women with vulvodynia

Physiotherapy interventions may include different modalities such as education, manual therapy, biofeedback, electrical stimulation and dilation technique (Hartmann et al. 2007). Effectiveness of physiotherapy has been shown in many studies to reduce pain (Bergeron et al. 2002; Holland 2003; Downey et al. 2006; Fisher 2007; Gentilcore-Saulnier et al. 2010). Significant effects on muscle function have been reported by several authors (Bergeron et al. 2002; Gentilcore-Saulnier et al. 2010).

This presentation will draw upon these references:

- Arnold, L. D., G. A. Bachmann, et al. (2006). "Vulvodynia: Characteristics and Associations With Comorbidities and Quality of Life." Obstet Gynecol **107**(3): 617-624.
- Babula, O., I. Danielsson, et al. (2004). "Altered distribution of mannose-binding lectin alleles at exon I codon 54 in women with vulvar vestibulitis syndrome." Am J Obstet Gynecol **191**(3): 762-766.
- Bergeron, S., C. Brown, et al. (2002). "Physical therapy for vulvar vestibulitis syndrome: a retrospective study." J Sex Marital Ther **28**(3): 183-192.
- Bohm-Starke, N., M. Hilliges, et al. (1998). "Increased intraepithelial innervation in women with vulvar vestibulitis syndrome." Gynecol Obstet Invest **46**(4): 256-260.
- Bohm-Starke, N., U. Johannesson, et al. (2004). "Decreased mechanical pain threshold in the vestibular mucosa of women using oral contraceptives: a contributing factor in vulvar vestibulitis?" J Reprod Med **49**(11): 888-892.
- Bornstein, J., N. Goldschmid, et al. (2004). "Hyperinnervation and mast cell activation may be used as histopathologic diagnostic criteria for vulvar vestibulitis." Gynecol Obstet Invest **58**(3): 171-178.
- Bouchard, C., J. Brisson, et al. (2002). "Use of oral contraceptive pills and vulvar vestibulitis: a case-control study." Am J Epidemiol **156**(3): 254-261.
- Burrows, L. J., D. Klingman, et al. (2008). "Umbilical hypersensitivity in women with primary vestibulodynia." J Reprod Med **53**(6): 413-416.
- Desrochers, G., S. Bergeron, et al. (2009). "Fear avoidance and self-efficacy in relation to pain and sexual impairment in women with provoked vestibulodynia." Clin J Pain **25**(6): 520-527.
- Downey, P. and I. Frederick (2006). "Physical therapy treatment for vulvar vestibulitis: a case report." Journal of Women's Health Physical Therapy **30**(1): 16-19.
- Engman, M., H. Lindehammar, et al. (2004). "Surface electromyography diagnostics in women with partial vaginismus with or without vulvar vestibulitis and in asymptomatic women." J Psychosom Obstet Gynaecol **25**(3-4): 281-294.



- Fisher, K. A. (2007). "Management of dyspareunia and associated levator ani muscle overactivity." Phys Ther **87**(7): 935-941.
- Gentilcore-Saulnier, E., L. McLean, et al. (2010). "Pelvic Floor Muscle Assessment Outcomes in Women With and Without Provoked Vestibulodynia and the Impact of a Physical Therapy Program." J Sex Med **7**: 1003-1022.
- Glazer, H. I., M. Jantos, et al. (1998). "Electromyographic comparisons of the pelvic floor in women with dysesthetic vulvodynia and asymptomatic women." J Reprod Med **43**(11): 959-962.
- Hartmann, D., M. J. Strauhal, et al. (2007). "Treatment of women in the United States with localized, provoked vulvodynia: practice survey of women's health physical therapists." J Reprod Med **52**(1): 48-52.
- Hoffman, D. (2011). "Understanding multisymptom presentations in chronic pelvic pain: the inter-relationships between the viscera and myofascial pelvic floor dysfunction." Curr Pain Headache Rep **15**(5): 343-346.
- Holland, A. (2003). "Case report: physical therapy intervention for dyspareunia." Journal of the Section on Women's Health **27**(1): 18-20.
- Morin, M., S. Bergeron, et al. (2010). "Dynamometric assessment of the pelvic floor muscle function in women with and without provoked vestibulodynia." Neurourol Urodyn **29**: 1140-1141.
- Morin, M., S. Bergeron, et al. (2011). "Comparing pelvic floor muscle biometry in women with and without dyspareunia using 4D real time transperineal ultrasound." Neurourol Urodyn **30**(6): 1033-1034.
- Moyal-Barracco, M. and P. J. Lynch (2004). "2003 ISSVD terminology and classification of vulvodynia: a historical perspective." J Reprod Med **49**(10): 772-777.
- Pukall, C. F., Y. M. Binik, et al. (2002). "Vestibular tactile and pain thresholds in women with vulvar vestibulitis syndrome." Pain **96**(1-2): 163-175.
- Reissing, E. D., Y. M. Binik, et al. (2004). "Vaginal spasm, pain, and behavior: an empirical investigation of the diagnosis of vaginismus." Arch Sex Behav **33**(1): 5-17.
- Reissing, E. D., C. Brown, et al. (2005). "Pelvic floor muscle functioning in women with vulvar vestibulitis syndrome." J Psychosom Obstet Gynaecol **26**(2): 107-113.
- Rosen, N. O., S. Bergeron, et al. (2012). "Harmful or helpful: perceived solicitous and facilitative partner responses are differentially associated with pain and sexual satisfaction in women with provoked vestibulodynia." J Sex Med **9**(9): 2351-2360.
- Simons, D. G. and S. Mense (1998). "Understanding and measurement of muscle tone as related to clinical muscle pain." Pain **75**(1): 1-17.
- ter Kuile, M. M., S. Both, et al. (2010). "Cognitive behavioral therapy for sexual dysfunctions in women." Psychiatr Clin North Am **33**(3): 595-610.
- van der Velde, J., E. Laan, et al. (2001). "Vaginismus, a component of a general defensive reaction. an investigation of pelvic floor muscle activity during exposure to emotion-inducing film excerpts in women with and without vaginismus." Int Urogynecol J Pelvic Floor Dysfunct **12**(5): 328-331.

- Weiss, J. M. (2001). "Pelvic floor myofascial trigger points: manual therapy for interstitial cystitis and the urgency-frequency syndrome." J Urol **166**(6): 2226-2231.
- Westrom, L. V. and R. Willen (1998). "Vestibular nerve fiber proliferation in vulvar vestibulitis syndrome." Obstet Gynecol **91**(4): 572-576.
- White, G., M. Jantos, et al. (1997). "Establishing the diagnosis of vulvar vestibulitis." J Reprod Med **42**(3): 157-160.
- Witkin, S. S., S. Gerber, et al. (2002). "Differential characterization of women with vulvar vestibulitis syndrome." Am J Obstet Gynecol **187**(3): 589-594.
- Witkin, S. S., S. Gerber, et al. (2002). "Influence of interleukin-1 receptor antagonist gene polymorphism on disease." Clin Infect Dis **34**(2): 204-209.
- Zolnoun, D., K. Hartmann, et al. (2006). "A conceptual model for the pathophysiology of vulvar vestibulitis syndrome." Obstet Gynecol Surv **61**(6): 395-401; quiz 423.

